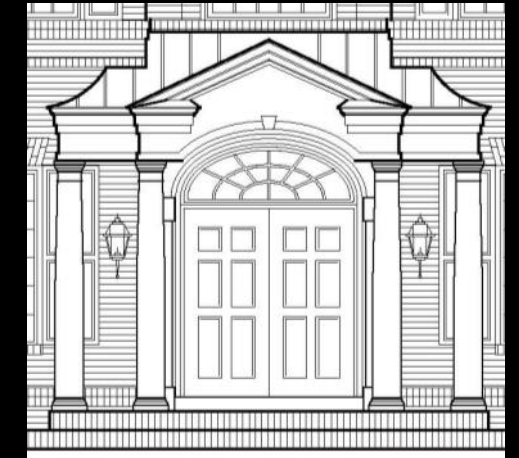
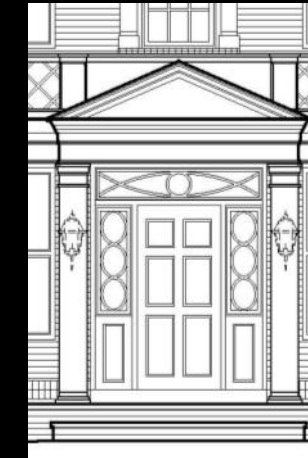
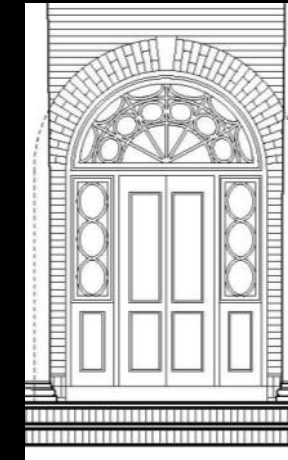
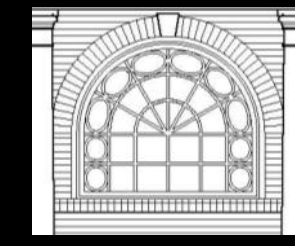
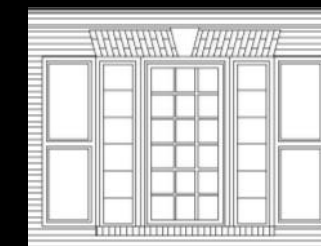
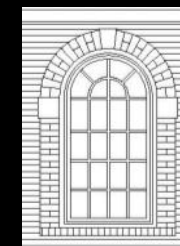
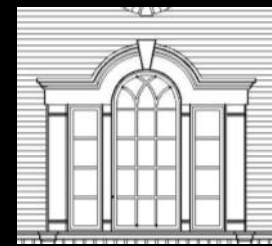
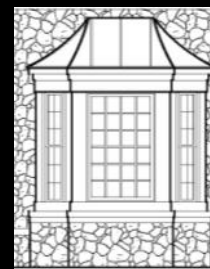
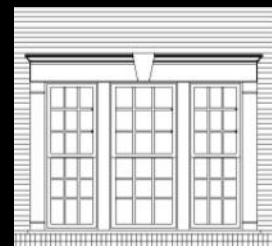
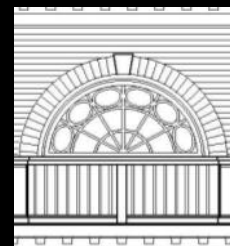
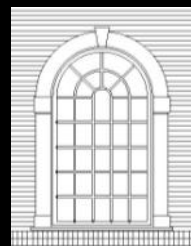
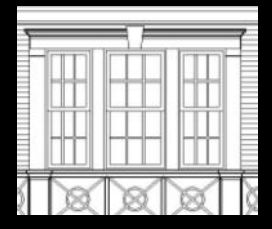
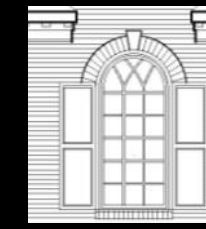
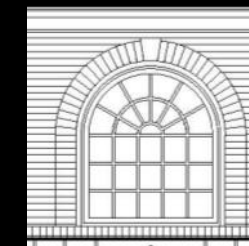
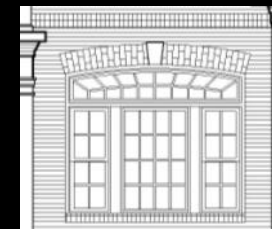
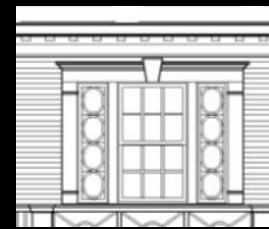
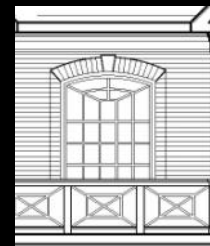
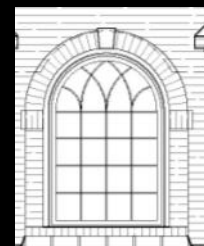
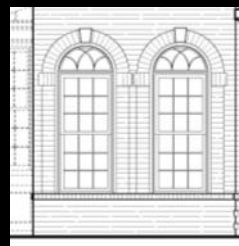


Carrington Homes' Colonial Revival Architectural Details

Front Entry
Details



Window
Details



Loudoun County's *Rich Architectural Heritage*

1720-1820 Loudoun County, Virginia is home to several well-preserved mansions from the Colonial period of the early 1700s through the early 1800s. Characterizing these period mansions are symmetrical designs, central roof gables, dormer windows, multiple chimneys, front entries with pediments, columned front porches, and sunrooms or porches on the sides of the homes.



Dodona Manor, Leesburg, VA, mid 1820s



Belmont Plantation, Ashburn, VA, 1799



Birkby House, Leesburg, VA, mid 1700s



Oatlands Plantation, Leesburg, VA, 1798



Whitehall Manor, Bluemont, VA, 1810

Colonial Revival Architecture

1860-1940 About fifty years after the end of the Colonial architectural period, details that mimicked this era began to reappear. The new era, known as *Colonial Revival*, was heavily influenced by earlier Georgian and Federal style homes and came as a spike in American pride fueled the nation and people began to take an interest in historic preservation.



King Street, Leesburg, VA, 1912
Photo courtesy of www.mris.com.



Kalorama, Washington, DC, 1927
Photo courtesy of www.mris.com.



Selma Lane, Leesburg, VA, 1860
Photo courtesy of www.mris.com.



Buckhead, Atlanta, GA, 1929
Photo courtesy of www.buckheadrealestate.com.



Western Connecticut, 1950s
Architectural Digest, Photo by Michael Moran.



Western Connecticut,
Frank Cheney Jr House, 1900
Photo courtesy of www.historicbuildingset.com.

Carrington Homes' *Colonial Revival Architecture*

2011 Carrington Homes is going back to our country's architectural roots with our fantastic new floor plans and exquisite exterior elevations. As in the Colonial and Colonial Revival periods of yesterday, we're bringing back the beauty and details that are often forgotten yet belong in new home construction today.



Avington Way



Braeburn Manor



Chatham Hall



Devonshire Place