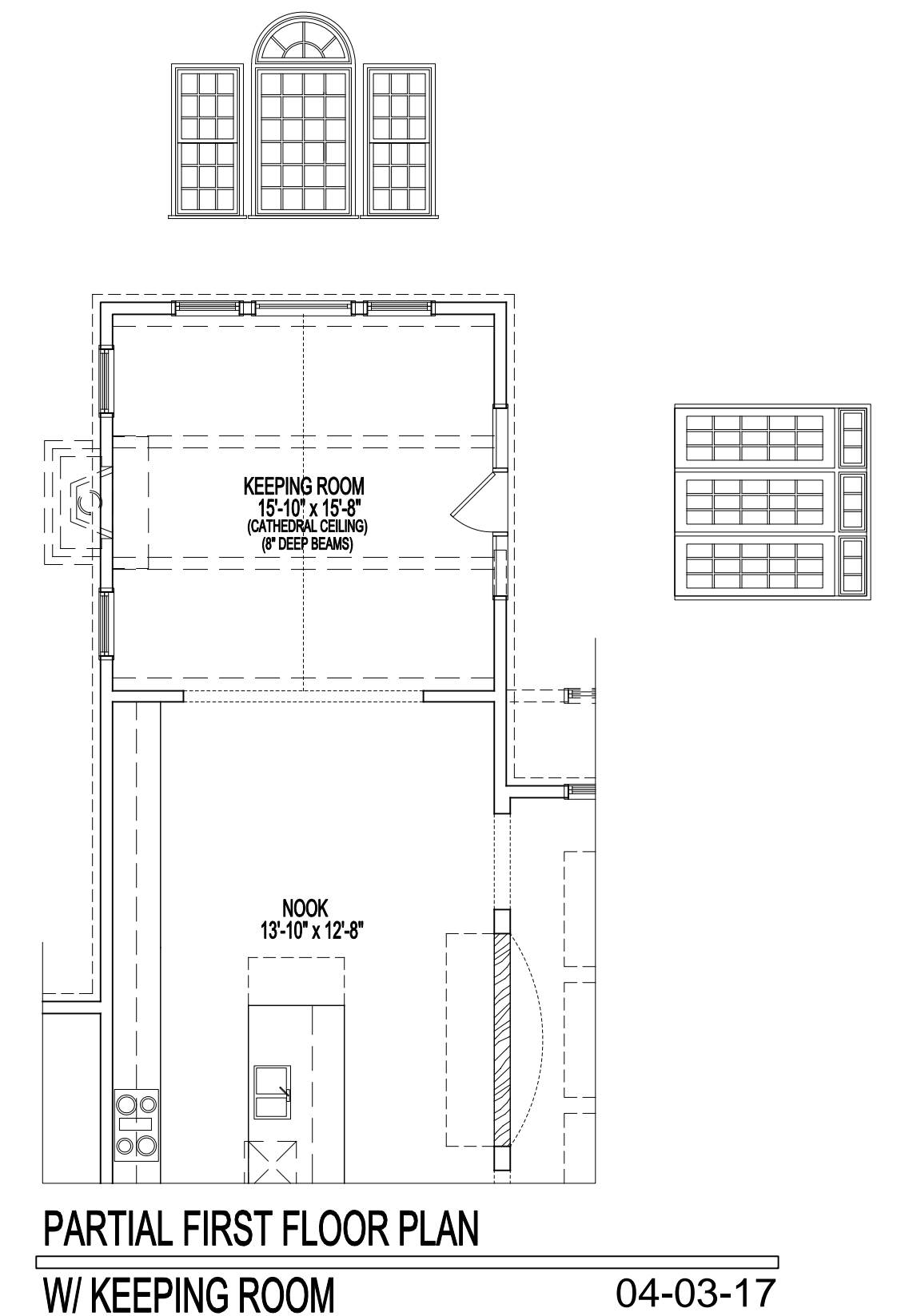
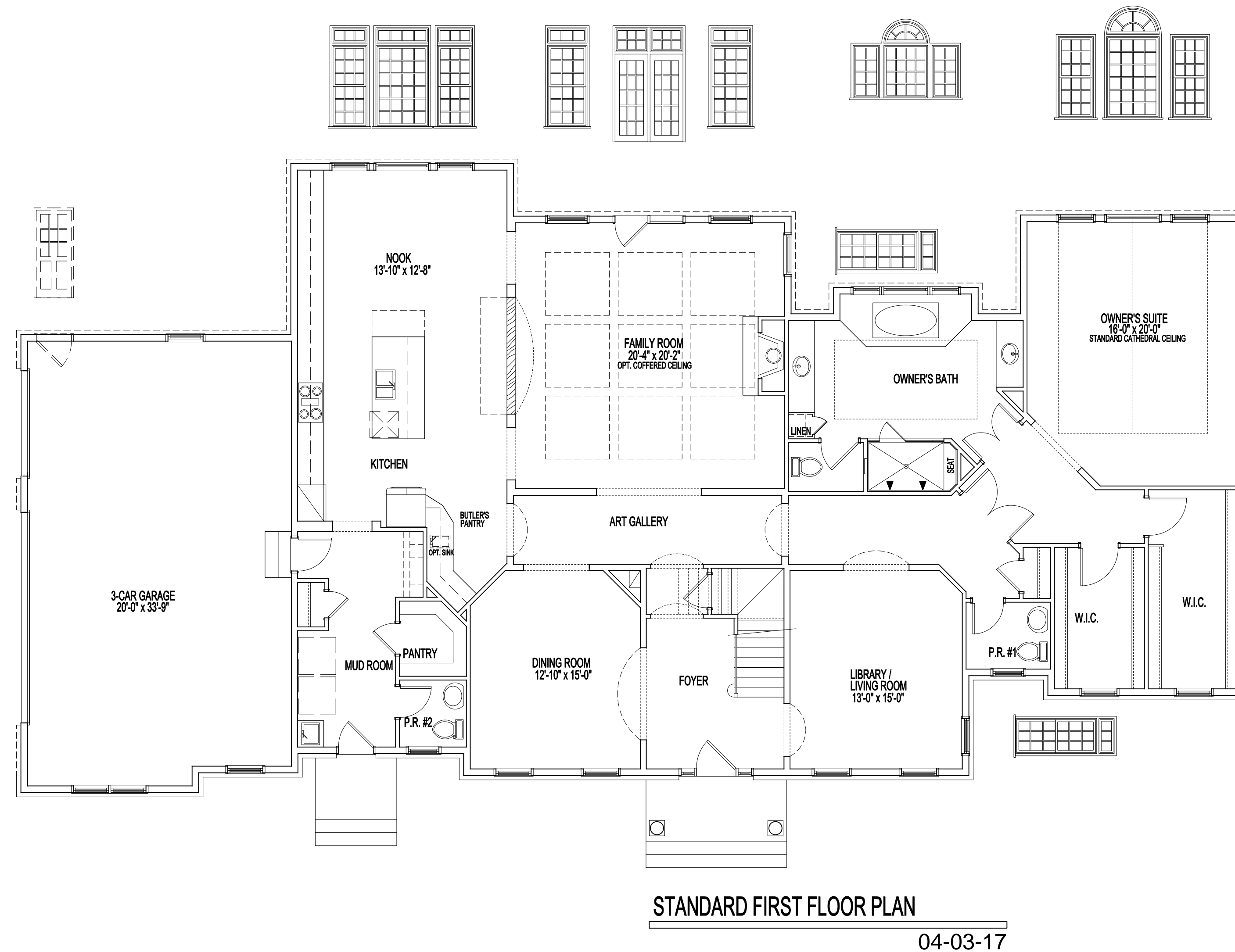
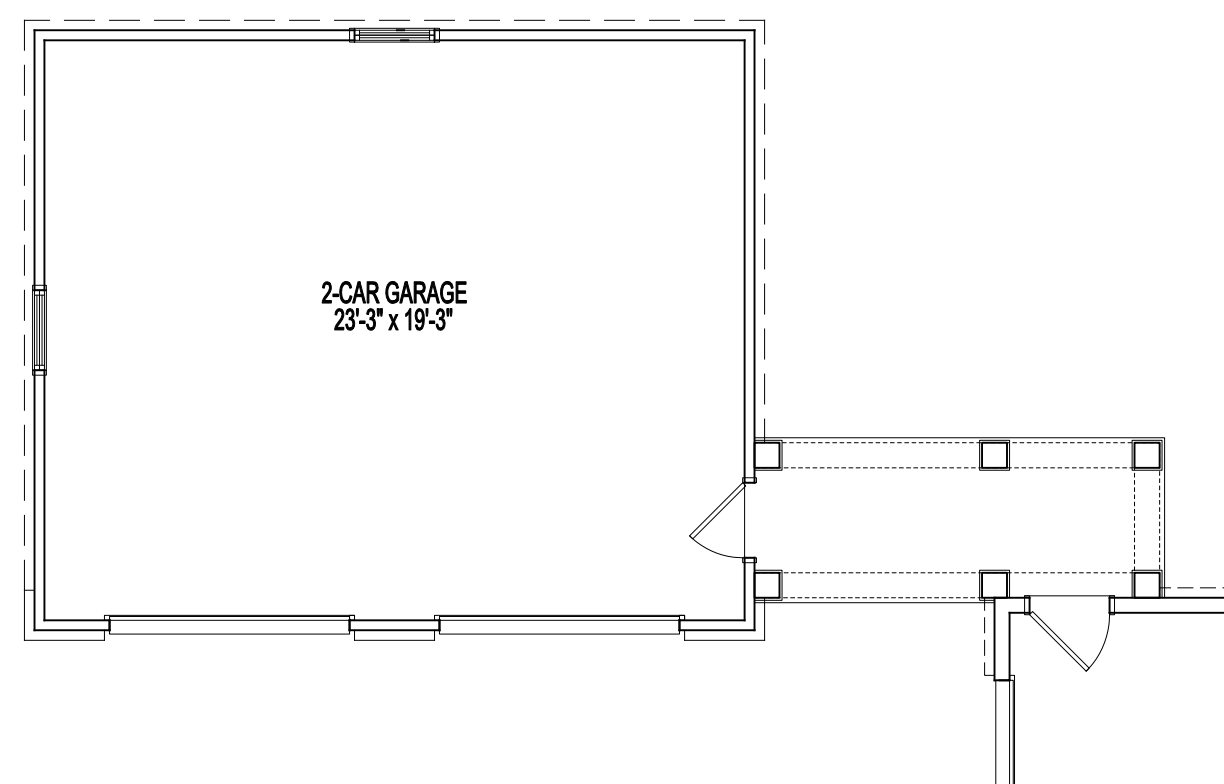
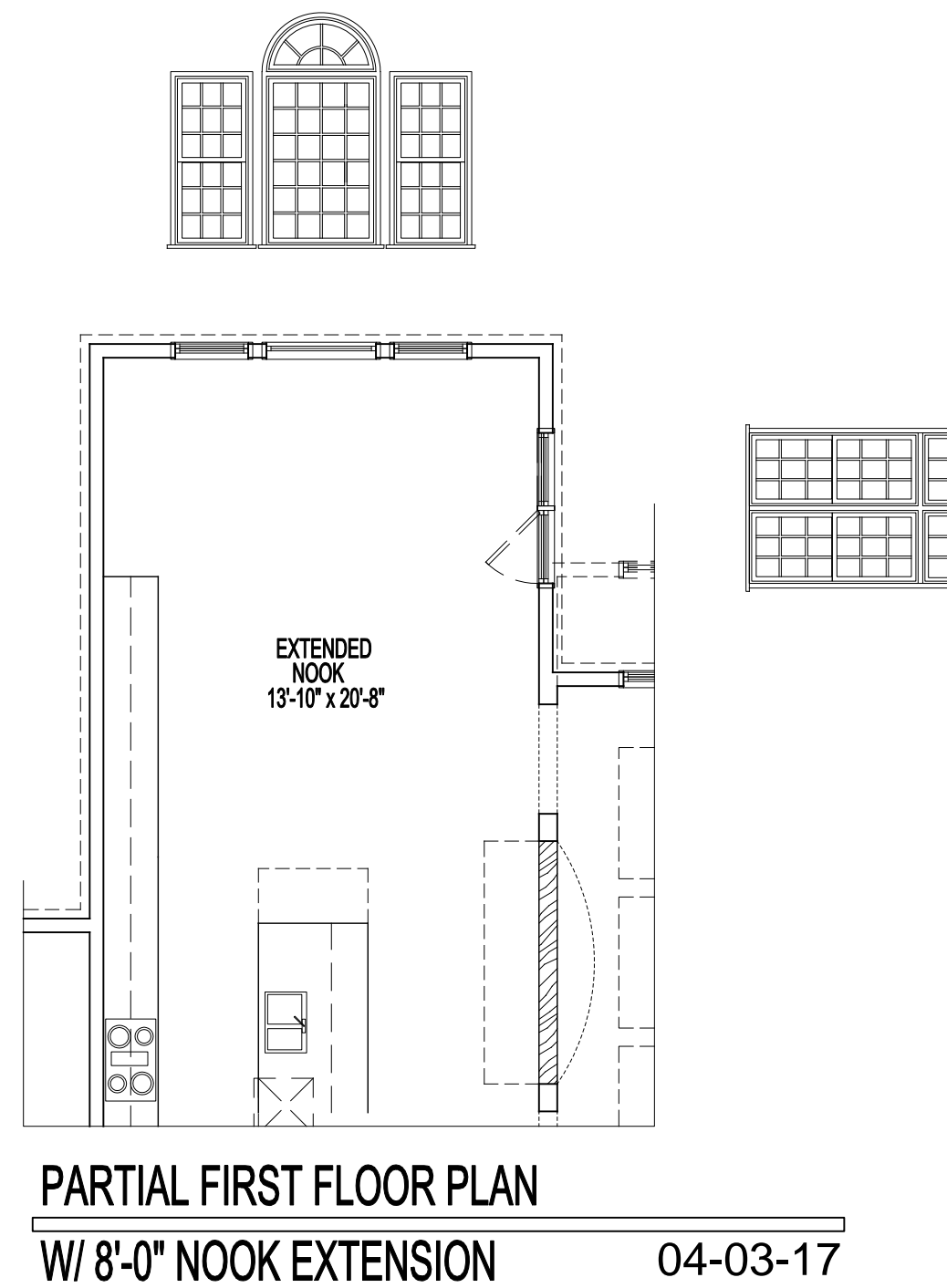
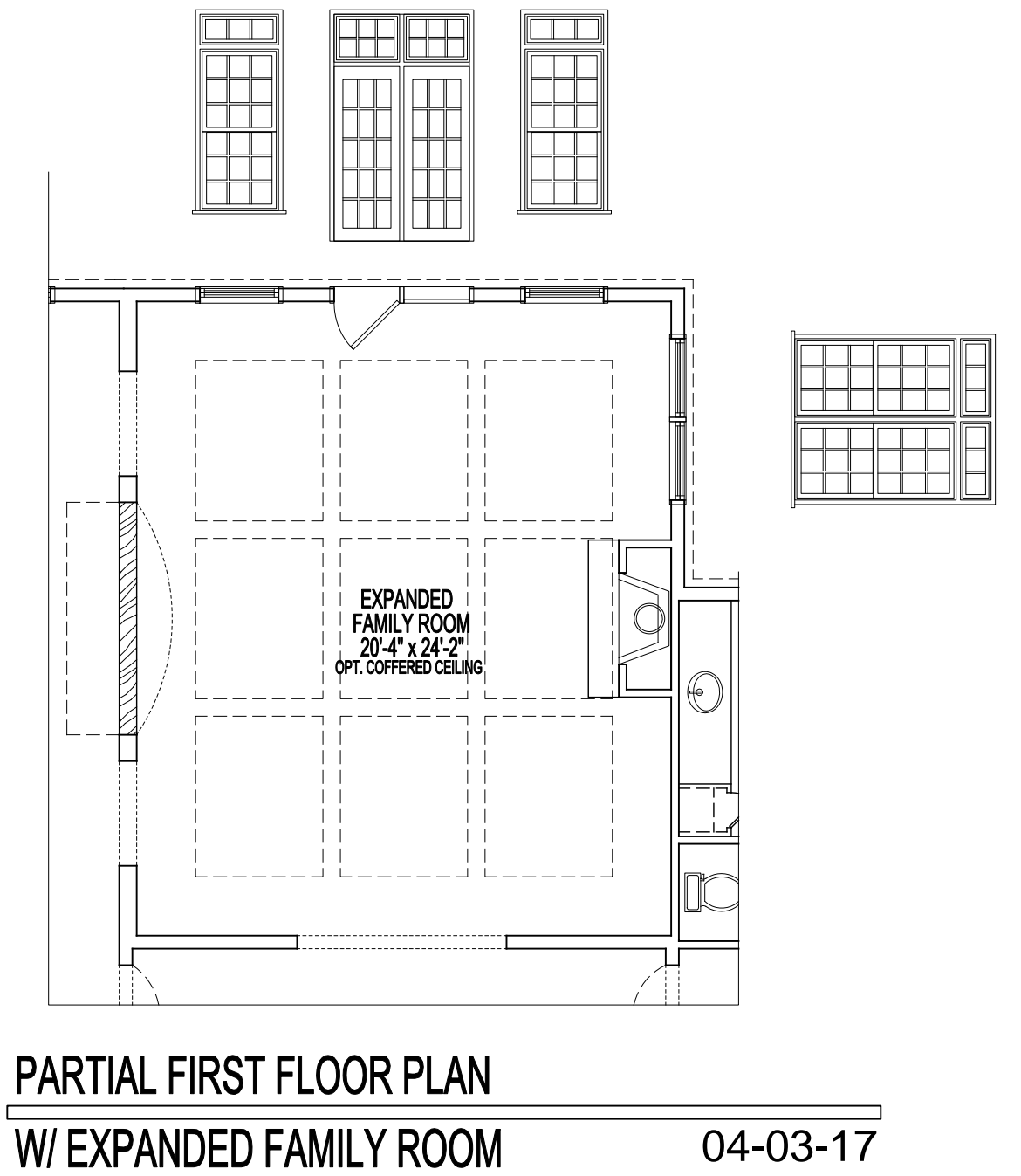
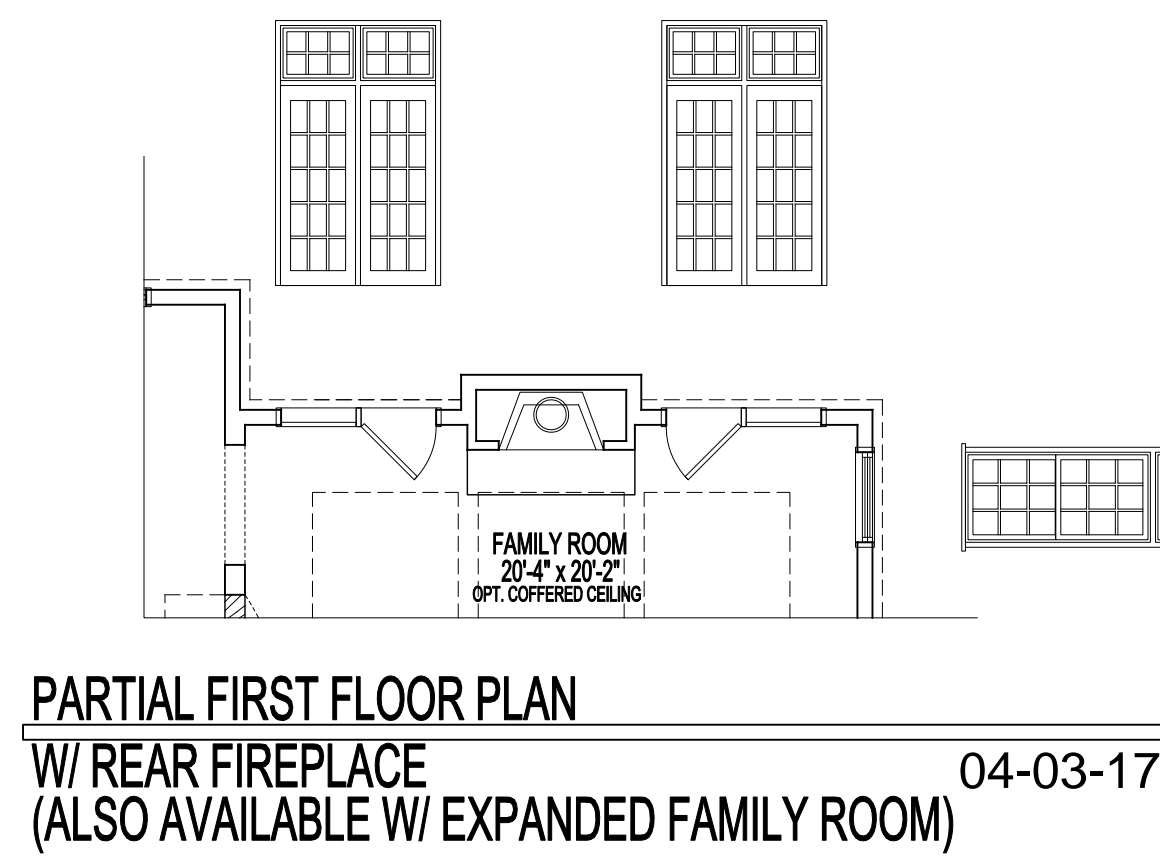
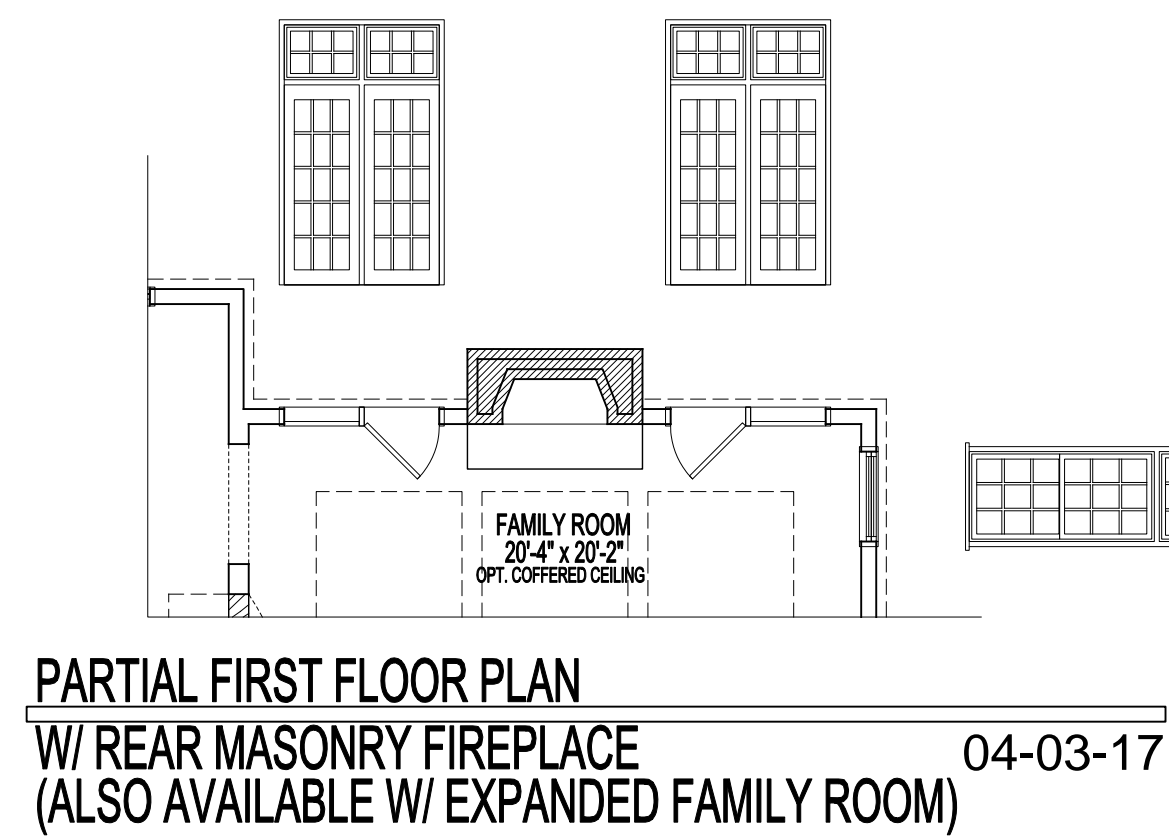
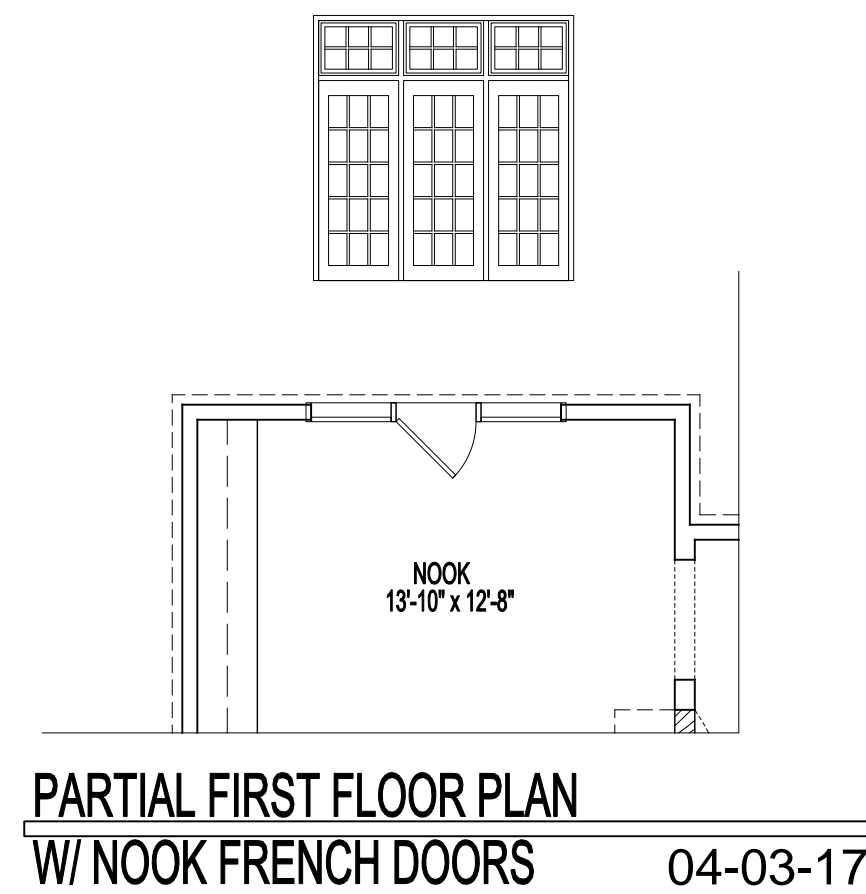


# WISTERIA GLEN - COLLECTION II

## STANDARD PLAN AND STRUCTURAL OPTIONS



Room sizes for the Dining Room, Living Room, Library, Foyer, and Bedrooms at the front of the house may increase per Elevation. Alternate Elevations may include Bay or Box Bay Windows as well as building offsets.

See sales manager for floor plan and room size dimensions with Alternate Elevations.

### 10'-0" FIRST FLOOR CEILING HEIGHT

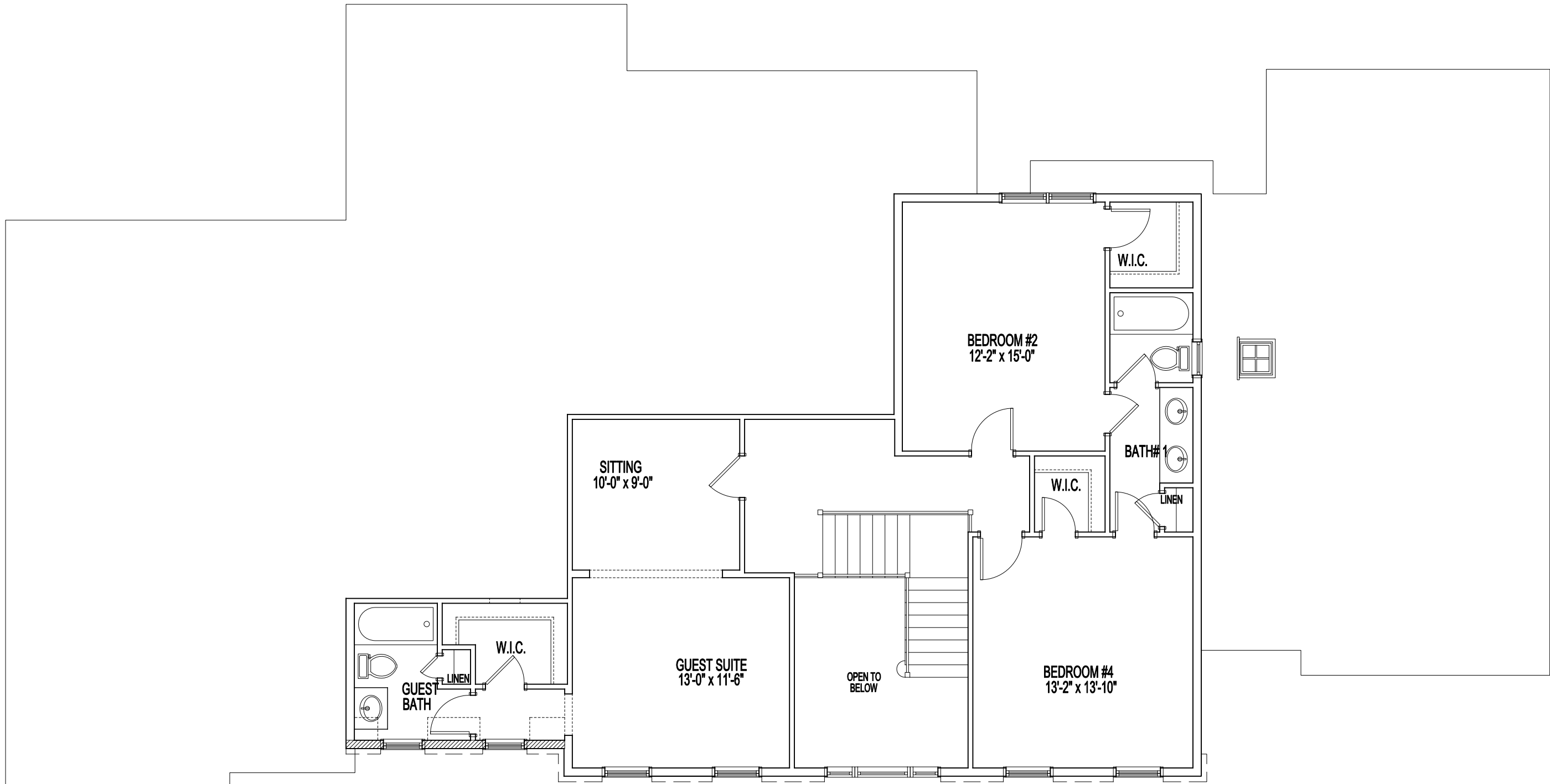
Each Carrington model and floor plan features art galleries to enhance the circulation of each home, state of the art custom kitchens, and high quality interior woodworking details including standard dentil and Greek key four piece crown moldings, plinth blocks, and arches (per plan). In addition to a broad choice of structural options, a Carrington Home can be further customized to suit your family's lifestyle and needs.

\*Blueprints take precedence over matrices.



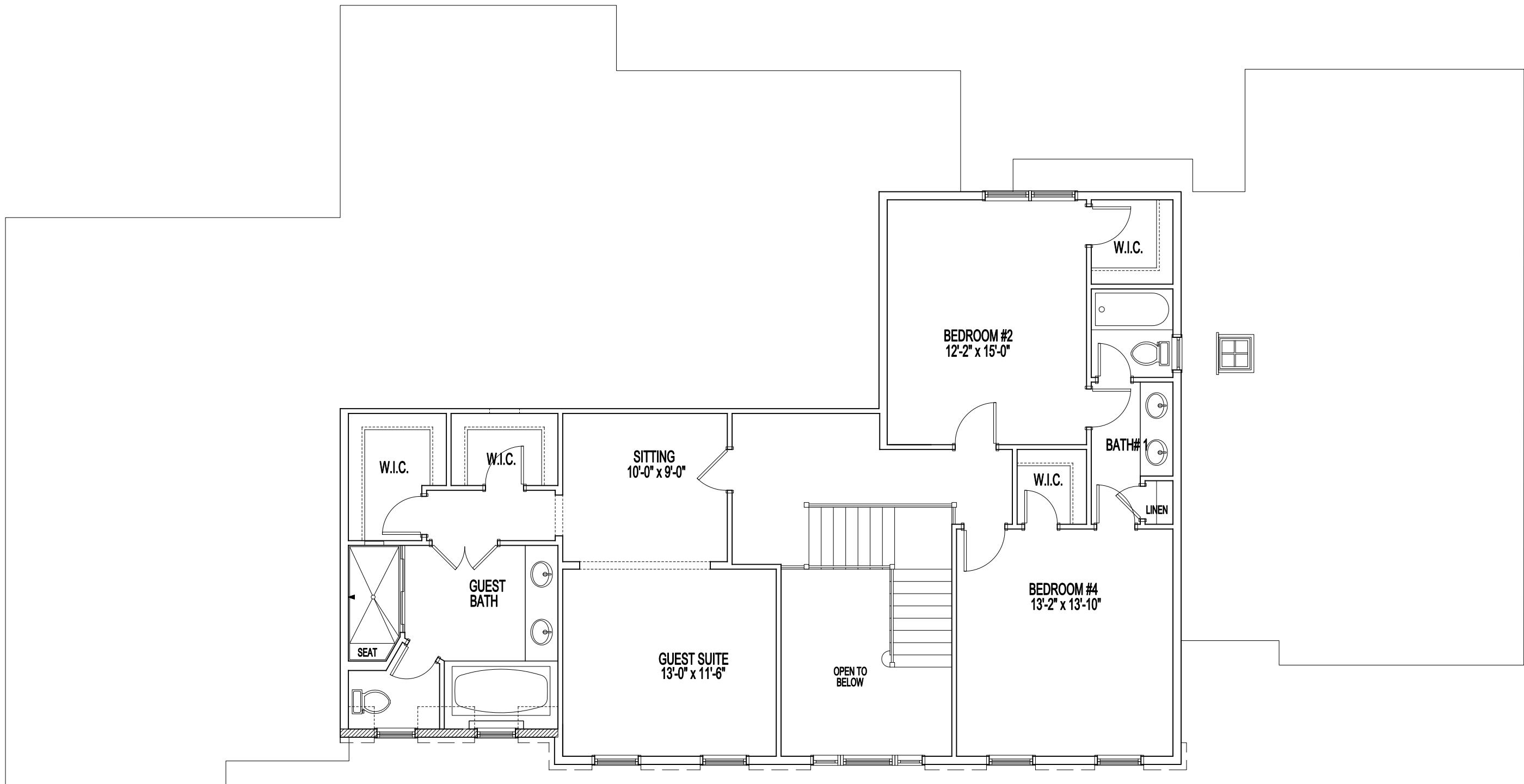
# WISTERIA GLEN - COLLECTION II

## STANDARD PLAN AND STRUCTURAL OPTIONS



STANDARD SECOND FLOOR PLAN

04-03-17



SECOND FLOOR PLAN

W/ OPT. DELUXE GUEST SUITE

04-03-17

Room sizes for the Dining Room, Living Room, Library, Foyer, and Bedrooms at the front of the house may increase per Elevation. Alternate Elevations may include Bay or Box Bay Windows as well as building offsets.

See sales manager for floor plan and room size dimensions with Alternate Elevations.

### 9'-0" SECOND FLOOR CEILING HEIGHT

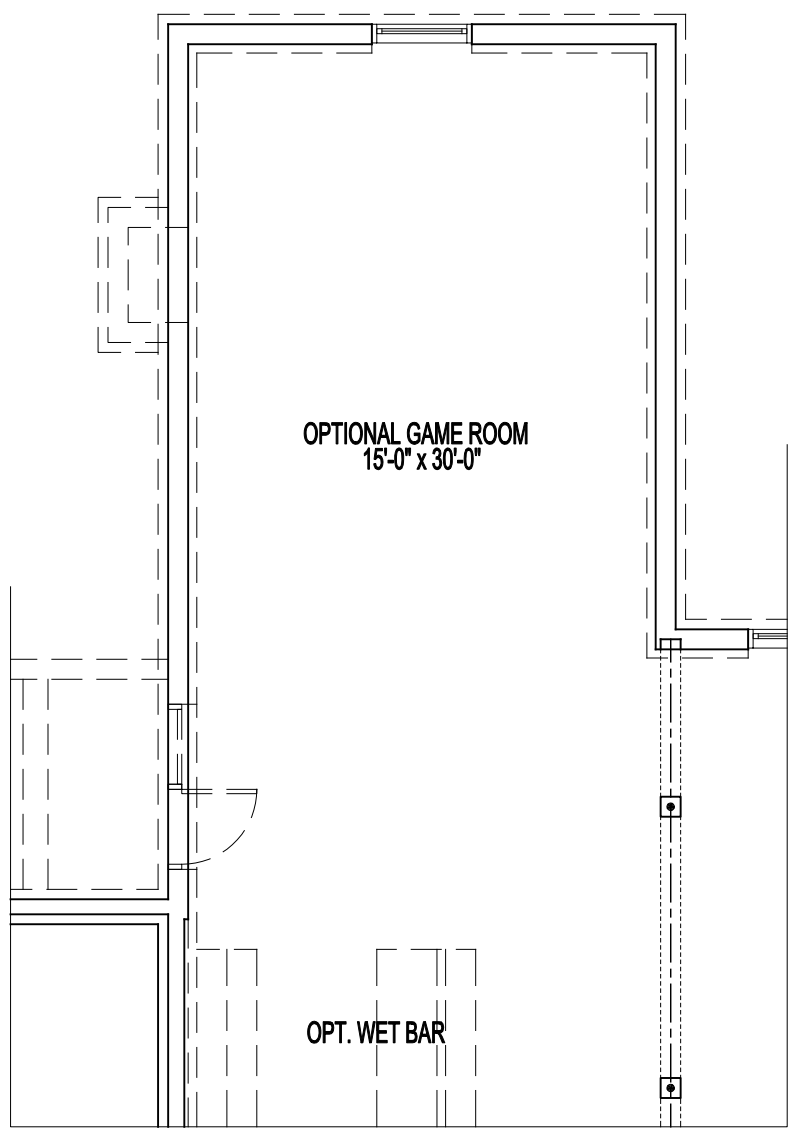
Each Carrington model and floor plan features art galleries to enhance the circulation of each home, state of the art custom kitchens, and high quality interior woodworking details including standard dentil and Greek key four piece crown moldings, plinth blocks, and arches (per plan). In addition to a broad choice of structural options, a Carrington Home can be further customized to suit your family's lifestyle and needs.

\*Blueprints take precedence over matrices.

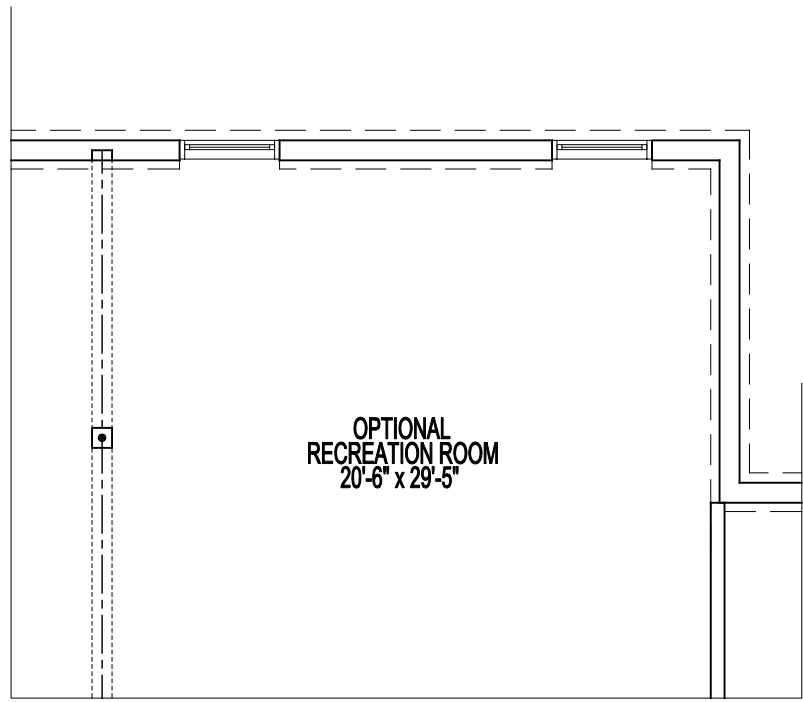


# WISTERIA GLEN - COLLECTION II

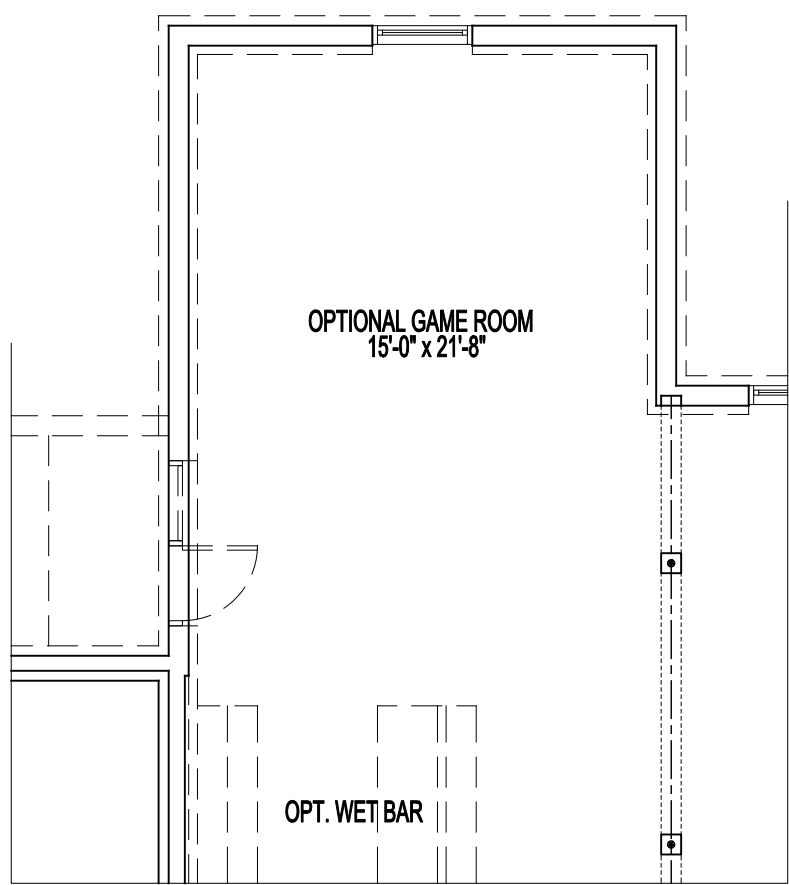
## STANDARD PLAN AND STRUCTURAL OPTIONS



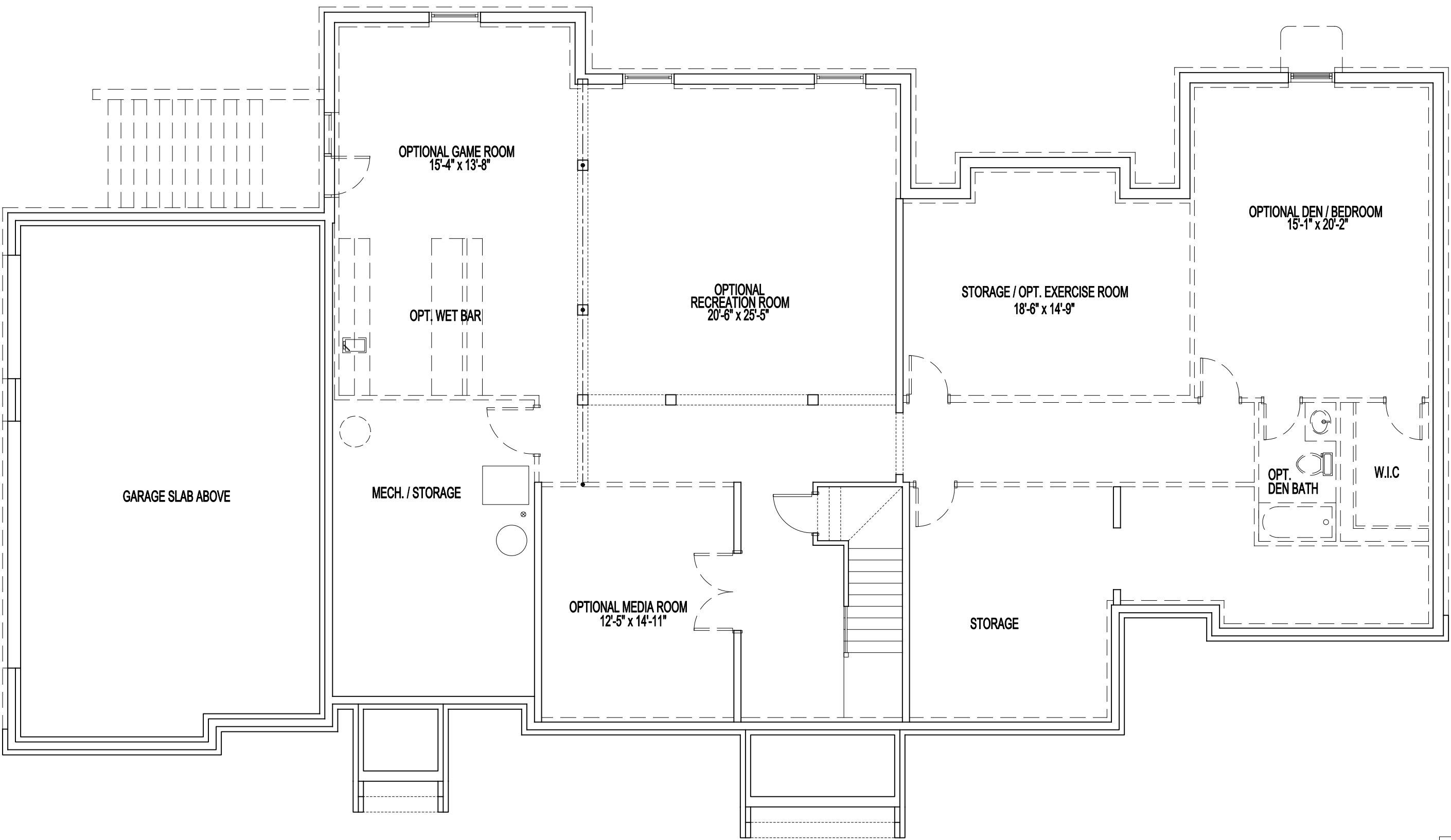
PARTIAL FOUNDATION / BASEMENT PLAN  
W/ KEEPING ROOM 04-03-17



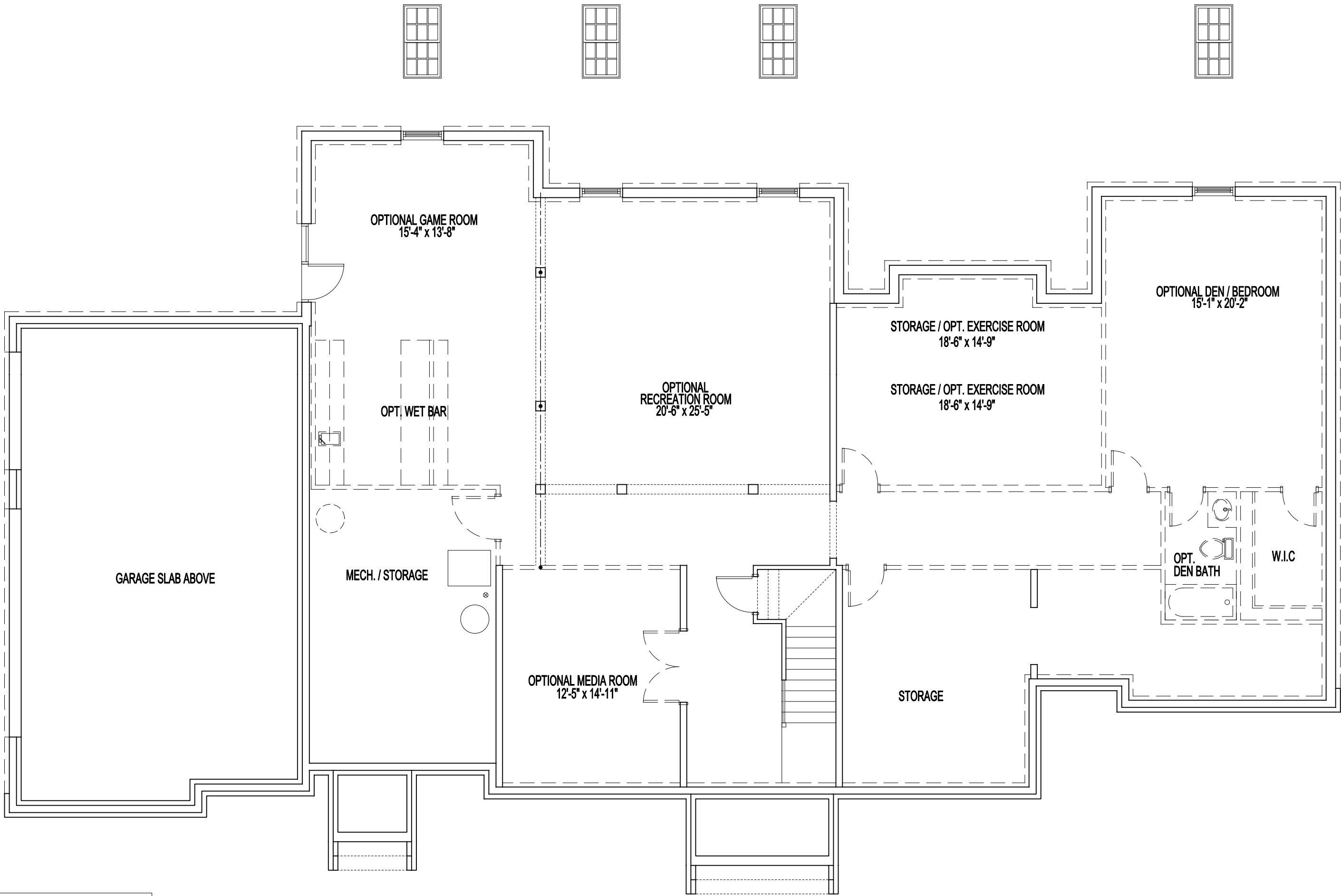
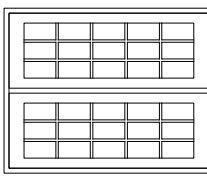
PARTIAL FOUNDATION / BASEMENT PLAN  
W/ EXPANDED FAMILY ROOM 04-03-17



PARTIAL FOUNDATION / BASEMENT PLAN  
W/ 8'-0" NOOK EXTENSION 04-03-17



FOUNDATION / BASEMENT PLAN  
(IN-GROUND) 04-03-17



FOUNDATION / BASEMENT PLAN  
W/ WALKOUT 04-03-17

Room sizes for the Dining Room, Living Room, Library, Foyer, and Bedrooms at the front of the house may increase per Elevation. Alternate Elevations may include Bay or Box Bay Windows as well as building offsets.

See sales manager for floor plan and room size dimensions with Alternate Elevations.

### 9'-0" BASEMENT CEILING HEIGHT

Each Carrington model and floor plan features art galleries to enhance the circulation of each home, state of the art custom kitchens, and high quality interior woodworking details including standard dentil and Greek key four piece crown moldings, plinth blocks, and arches (per plan). In addition to a broad choice of structural options, a Carrington Home can be further customized to suit your family's lifestyle and needs.

\*Blueprints take precedence over matrices.



# WISTERIA GLEN - COLLECTION II

## EXTERIOR ELEVATION OPTIONS



FRONT ELEVATION  
ELEVATION #1A 04-03-17



PARTIAL RIGHT SIDE ELEVATION  
ELEVATION #1A 04-03-17



FRONT ELEVATION  
ELEVATION #1A W/ BRICK MAIN HOUSE 04-03-17



FRONT ELEVATION  
ELEVATION #1A W/ SIDING AND STONE FRONT 04-03-17



FRONT ELEVATION  
ELEVATION #1B 3/4 04-03-17



PARTIAL RIGHT SIDE ELEVATION  
ELEVATION #1B 3/4 04-03-17

Room sizes for the Dining Room, Living Room, Library, Foyer, and Bedrooms at the front of the house may increase per Elevation. Alternate Elevations may include Bay or Box Bay Windows as well as building offsets.

See sales manager for floor plan and room size dimensions with Alternate Elevations.

Each Carrington model and floor plan features art galleries to enhance the circulation of each home, state of the art custom kitchens, and high quality interior woodworking details including standard dentil and Greek key four piece crown moldings, plinth blocks, and arches (per plan). In addition to a broad choice of structural options, a Carrington Home can be further customized to suit your family's lifestyle and needs.

\*Blueprints take precedence over matrices.





# WISTERIA GLEN - COLLECTION II

## EXTERIOR ELEVATION OPTIONS



FRONT ELEVATION  
ELEVATION #3A 04-03-17



PARTIAL RIGHT SIDE ELEVATION  
ELEVATION #3A 04-03-17



FRONT ELEVATION  
ELEVATION #3A W/ SIDING AND STONE FRONT 04-03-17



FRONT ELEVATION  
ELEVATION #3B 04-03-17



PARTIAL RIGHT SIDE ELEVATION  
ELEVATION #3B 04-03-17

Room sizes for the Dining Room, Living Room, Library, Foyer, and Bedrooms at the front of the house may increase per Elevation. Alternate Elevations may include Bay or Box Bay Windows as well as building offsets.

See sales manager for floor plan and room size dimensions with Alternate Elevations.

Each Carrington model and floor plan features art galleries to enhance the circulation of each home, state of the art custom kitchens, and high quality interior woodworking details including standard dentil and Greek key four piece crown moldings, plinth blocks, and arches (per plan). In addition to a broad choice of structural options, a Carrington Home can be further customized to suit your family's lifestyle and needs.

\*Blueprints take precedence over matrices.



# WISTERIA GLEN - COLLECTION II

## EXTERIOR ELEVATION OPTIONS



FRONT ELEVATION  
ELEVATION #4A 04-03-17

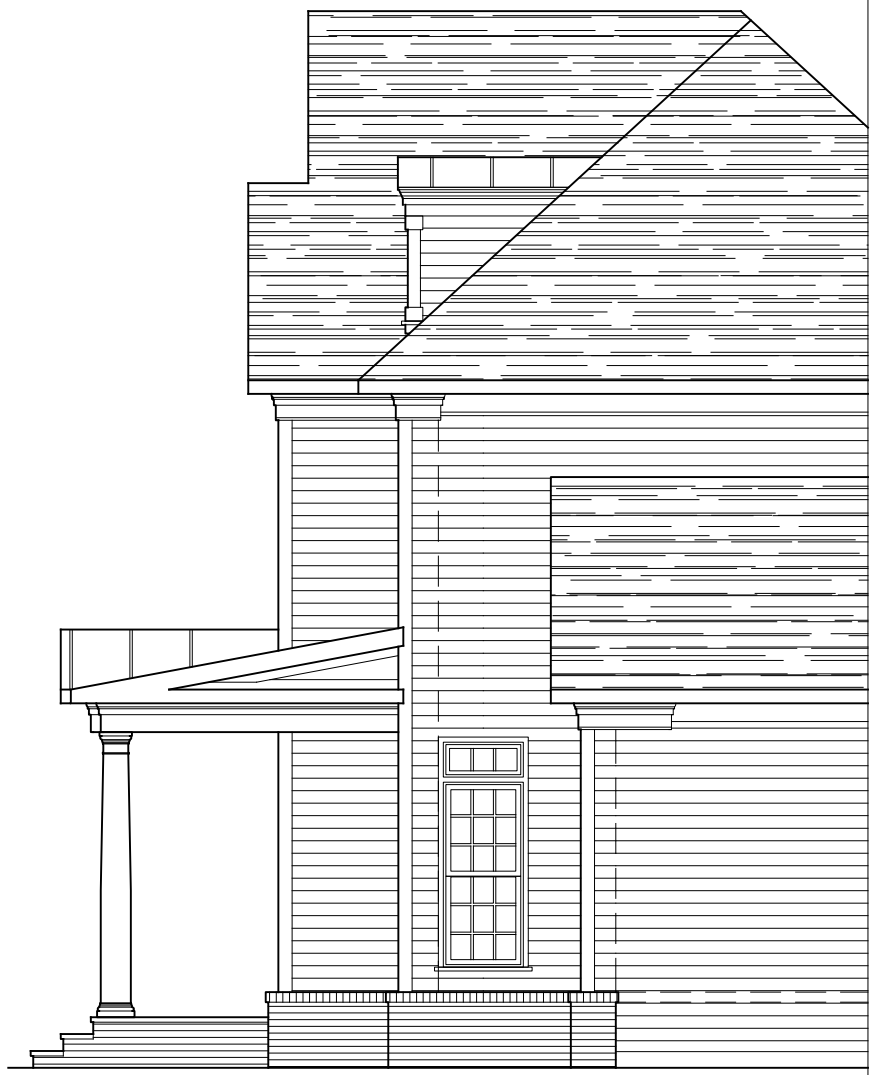
PARTIAL RIGHT SIDE ELEVATION  
ELEVATION #4A 04-03-17



FRONT ELEVATION  
ELEVATION #4A W/ SIDING AND STONE FRONT 04-03-17



FRONT ELEVATION  
ELEVATION #4B 04-03-17



PARTIAL RIGHT SIDE ELEVATION  
ELEVATION #4B 04-03-17

Room sizes for the Dining Room, Living Room, Library, Foyer, and Bedrooms at the front of the house may increase per Elevation. Alternate Elevations may include Bay or Box Bay Windows as well as building offsets.

See sales manager for floor plan and room size dimensions with Alternate Elevations.

Each Carrington model and floor plan features art galleries to enhance the circulation of each home, state of the art custom kitchens, and high quality interior woodworking details including standard dentil and Greek key four piece crown moldings, plinth blocks, and arches (per plan). In addition to a broad choice of structural options, a Carrington Home can be further customized to suit your family's lifestyle and needs.

\*Blueprints take precedence over matrices.



# WISTERIA GLEN - COLLECTION II

## EXTERIOR ELEVATION OPTIONS



FRONT ELEVATION  
ELEVATION #1A W/ SIDING AND STONE FRONT      04-03-17  
W/ SIDE DETACHED 2-CAR GARAGE

Room sizes for the Dining Room, Living Room, Library, Foyer, and Bedrooms at the front of the house may increase per Elevation. Alternate Elevations may include Bay or Box Bay Windows as well as building offsets.

See sales manager for floor plan and room size dimensions with Alternate Elevations.

Each Carrington model and floor plan features art galleries to enhance the circulation of each home, state of the art custom kitchens, and high quality interior woodworking details including standard dentil and Greek key four piece crown moldings, plinth blocks, and arches (per plan). In addition to a broad choice of structural options, a Carrington Home can be further customized to suit your family's lifestyle and needs.

\*Blueprints take precedence over matrices.

